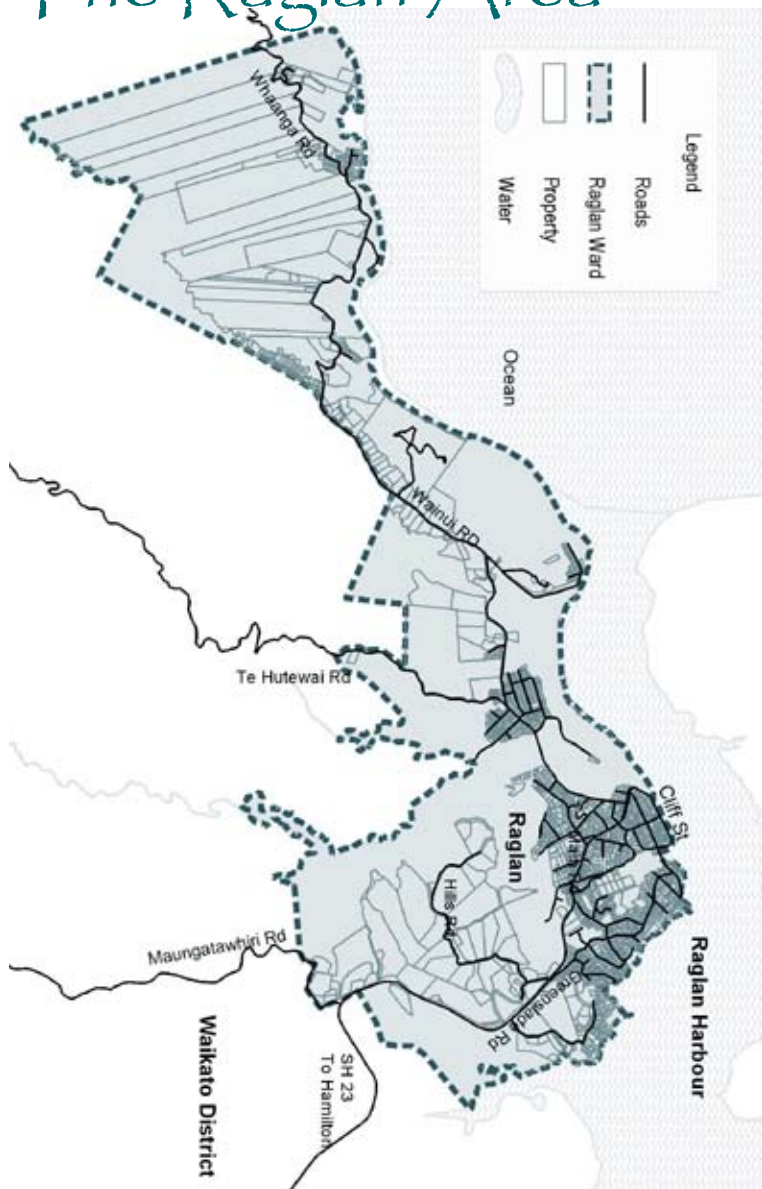


# Raglan Naturally



# The Raglan Area



# Vision

To generate opportunities for local employment, new business and planned growth while protecting and enhancing Raglan's unique character and diversity and having special regard for the environment.



# Key Statistics

These figures are based on Census 2006 data held by Statistics New Zealand.

	<b>Raglan Ward</b>	<b>Waikato District</b>	<b>New Zealand</b>
Population	3,459	43,959	4,027,947
Percentage aged under 15 ys	20%	25.50%	21.54%
Percentage aged over 65 ys	12%	10.00%	12.30%
Private Dwellings	1,296	15,090	1,471,746
Ethnicity - Percentage of Maori	18.16%	25.85%	14.65%
Post School Qualifications	46.90%	44.80%	46.18%
Unemployment Rate	4%	3.54%	3.37%
Median Income	\$18,900	\$25,700.00	\$24,400.00



# A Community Snapshot

Raglan is a town steeped in old history tracked back nearly 1000 years to the early Maori who arrived on the migratory canoe – Tainui.

The early European settlers knew Raglan as Whangaroa (which was later changed to Whaingaroa – the long pursuit). In 1858 it was renamed Raglan after Lord Raglan, an officer who led the charge of the Light Brigade in the Crimean War.

Raglan's early economy depended on its harbour and wharf, with the wharf being a busy merchant shipping terminal until shipping was diverted to Tauranga in the late 1960s.

Much of the town's European history is told through its current street names and the local architecture including the Harbour View Hotel that was first built in 1866 by George Moon.

Raglan's population has grown in the past 10 years as access roads have been improved and people want somewhere to escape the busy city life. Renown for its surf beaches and laid back lifestyle Raglan's population grows by approximately 300 - 400% each summer as people flock to enjoy the sunshine and the sea.



# A Plan for Raglan

## What will this plan achieve?

Your Community Plan is the vehicle for community discussion, on which future outcomes for Raglan can be determined.

The community has expressed a range of views on a number of broad topics. Raglan is a diverse community, and so any particular statements in this plan does not necessarily reflect the community's collective view. The views expressed here will be taken into account when the Council undertakes more detailed consultation on specific topics.

It is important to remember, this is not a Council Plan. This Plan is for the whole of Raglan Community, and is owned by you!

Your Community Plan is a collection of ideas for action. It is a priority list of desired works and activities that has been identified over the past months and years.

As well as focusing community debate and getting people involved in the future of their community, the Plan will help influence Waikato District Council's programme of works during its annual and long-term planning processes.

A number of the issues raised are not Council's responsibility but the Council will work with the Community and Raglan Community Board to advocate and facilitate the process.



## The Raglan Naturally process...

The original Raglan Naturally document was created following an extensive community consultation process.

Six years on it was time to review the document and the priorities it outlined.

In late 2007 a stocktake was carried out on the 2001 Raglan Naturally document to consider what projects had been accomplished already, what was underway and what was still to occur. That document can be found on the Raglan Naturally website: [www.waikatodc.govt.nz/raglannaturally](http://www.waikatodc.govt.nz/raglannaturally)

Following the stocktake, comprehensive consultation was carried out to ask the community for their vision for the town and their current key priorities and actions. This was done through a written submission form and through people attending one of two open days in the town.

The full results of the consultation are also published on the website. This document is a summary of the key actions and priorities identified by the community.

Thank you for taking part and having your say in the future of Raglan.



# Raglan Community Board

Name		Phone Number
Peter Storey	Chairperson	07 825 7882
Leanna Darby	Deputy Chairperson	07 825 8609
Clint Baddeley *		021 155 3778
Terry Gibbs		07 825 8997
Sarah Jane Harihari		07 825 5176
Rangimonehu Kereopa		07 825 0556
Priscilla Spooner		07 825 0388

\* *Local Councillor (appointed by Council to the Community Board)*





# Key Issues and Projects

## Link to Community Outcomes

Under the Local Government Act 2002, Councils are required to facilitate the identification of, and report on the achievement towards Community Outcomes for their residents. Having consulted with the Waikato District community, the following Community Outcomes have been identified:

Accessible Waikato	A district where the community's access to infrastructure, transport and technology meets its needs.
Active Waikato	A district that provides a variety of recreation and leisure options for the community,
Educated Waikato	A district where education options are varied, and allow our community to be skilled for work and life.
Green Waikato	A district where our natural resources are protected, developed and enhanced for future generations.
Safe Waikato	A district where people feel safe and supported within their communities and where crime is under control.
Sustainable Waikato	A district where growth is effectively managed.
Thriving Waikato	A district where business and industry are encouraged and supported and employment contributes to a successful local economy.
Vibrant Waikato	A district where our heritage and culture are recognised, protected and celebrated.
Well Waikato	A district where people can access quality community health and care services.



## Issues and Projects

### Township Development Plan

- Final discussions with the Raglan Community Board indicated a significant gap between feedback from the Raglan Naturally process and feedback Council receives annually through the budgeting process. This gap relates to infrastructure projects and these will continue to be a priority for Raglan. These projects are contained in the Township Development Plan and will be reported on separately to the community, through the Raglan Community Board. These projects are reported monthly to the Raglan Community Board.

Issues and projects that received the most comment during consultation included:

- More recreational options for youth
- A new museum with art galleries and information centre
- Funding support for Whaingaroa Harbourcare
- Indoor swimming pool
- Keep waterways clean, riparian planting
- Don't let sewage into the harbour/ocean/waterways
- Keep beaches clean
- Open another day care centre
- Affordable housing and land
- Create a community activity centre with leisure and recreational facilities
- Upgrade or have improved sewage solutions

The following have been identified (in no particular order) as key issues and projects:

### Accessible Waikato

- Create a boardwalk from town to Whale Bay
- Footpath from town to Manu Bay
- Continue Cliff Street footpath to the wharf
- Continue Lorenzen Bay footpath to town
- Create footpath on Stewart and Gilmour Street



- ☛ Create more bicycle lanes around Raglan and to the beaches
- ☛ More welcoming signs at the entrance
- ☛ Upgrade and improve sewage solutions
- ☛ Two lanes on Wainui bridge
- ☛ Safety rails on Wainui bridge
- ☛ More flexible and frequent bus service to Hamilton
- ☛ Subsidised bus service to Hamilton
- ☛ More parking spaces in CBD
- ☛ Extended parking times in the CBD
- ☛ Free car parking for businesses away from the Main Street
- ☛ More boat parking at wharf
- ☛ Underground all power in Raglan
- ☛ Improved telecommunications access e.g broadband
- ☛ Improve water quality
- ☛ More drinking fountains especially at the skate park
- ☛ Improve water supply to Whale Bay especially for fire protection
- ☛ Rebuild the wharf at the end of James Street
- ☛ Better kerb and channel for all of Raglan
- ☛ Create dump stations for campervans and caravans
- ☛ More clean modern toilets in town
- ☛ Listen to all the voices in Raglan not just the environmental lobby

## Active Waikato

- ☛ Increase the number of reserves
- ☛ Develop new play areas for children especially in new subdivisions
- ☛ Redesign Manu Bay with cars at the back, a playground, BBQs, seating and shelter trees
- ☛ More gardens and parks in and around town
- ☛ Create an indoor swimming pool by the rugby club to include an indoor sports complex
- ☛ Increase recreational options for young people
  - ☛ Improve/finish the skatebowl
  - ☛ Create a recreation centre with activities for young people
  - ☛ Paintball
  - ☛ Bigger and more playgrounds
  - ☛ Movie theatres
  - ☛ Skateboard and bike lanes
  - ☛ Games rooms with bowling and an indoor skate park



- 🏀 Bigger basketball court with hoop and backboard with lighting
- 🚲 Develop bike paths
- 🚲 Create mountain bike tracks
- 🚲 Create a walkway and cycleway between Whale and Manu Bays

## Educated Waikato

- 🎓 More environmental education programmes
- 🕒 Change the time of the Community Board meetings to the evenings

## Green Waikato

- 🌿 Protect the coastline by keeping waterways clean, carrying out more riparian planting, cleaning beaches, and continued beautification programmes
- 🌿 More planting to prevent erosion
- 🌿 More native tree planting and mass tree planting using community groups
- 🌿 Encourage the use of alternative energy sources including wave, wind, solar
- 🌿 Support wind farms
- 🌿 Stricter environmental conditions on new subdivisions including increased planting
- 🌿 Protection of views
- 🌿 Develop community gardens
- 🌿 Plan forward planting of trees on main street
- 🌿 Plant more fruit trees in public places
- 🌿 Plant more natives
- 🌿 Save pohutukawas on Cliff Street
- 🌿 Continued funding for Xtreme Waste
- 🌿 More funding for Whaingaroa Harbour Care
- 🌿 No sewage into harbour or waterways
- 🌿 Recycling for rural residents
- 🌿 More recycling bins
- 🌿 More rubbish bins around the beaches, at Te Kopua bridge, walkway and jetty area
- 🌿 At least an annual inorganic collection
- 🌿 Council should fight the seabed mining issue



## Safe Waikato

- ☛ Is a safe and friendly place to live
- ☛ Open another day care centre
- ☛ 24/7 emergency services
- ☛ Civil Defence Emergency Management Team in Raglan West
- ☛ More security cameras especially in beach carparks
- ☛ More support for Maori Wardens and Night Owls
- ☛ A new surf tower
- ☛ Improved dog control
- ☛ Slow speed limit signage to 40K outside Te Uku School
- ☛ Ban cars from the Main Street
- ☛ Drop speed limit to 70K from Upper Wainui to Whale Bay and beyond
- ☛ Judder bar in Norrie Ave/Johnson Street
- ☛ Better passing lanes and slow lanes on main road to Hamilton
- ☛ Footpaths made pushchair friendly around three bridges
- ☛ Install barrier along footpath on Wainui Road
- ☛ Widen Wainui Road between town and the one way bridge
- ☛ Safer footpaths on Stewart Street
- ☛ Street lighting at Te Kopua
- ☛ Street lighting at the campground
- ☛ Street lighting on Marine Parade
- ☛ More open communication and community representation

## Sustainable Waikato

- ☛ Retain the character of the Raglan town centre
- ☛ Maintain the two-storey limit in the CBD
- ☛ No high rise
- ☛ A larger CBD with a focus on planting and landscaping paths and parking
- ☛ Maintain and develop Raglan's historic building theme
- ☛ Limit the growth of Raglan township
- ☛ Maintain and develop Raglan's historic building theme
- ☛ Keep the harbour free of commercial buildings
- ☛ No chain stores

- ☛ Make new subdivisions environmentally sustainable
- ☛ Limit suburban subdivisions

## Thriving Waikato

- ☛ Create sustainable employment
- ☛ More jobs for young people
- ☛ Identify an industrial area (strong support for SH23 before Raglan)
- ☛ No more building out coastal reserves
- ☛ Put a moratorium on new development applications until a Structure Plan is in place
- ☛ Well thought out Structure Plan that restricts housing and industrial development, increases minimum section size
- ☛ Create a village green piazza type town square or pedestrian area with cafes and paved areas
- ☛ Focus on attracting visitors and residents by developing annual events, outdoor activities, social events and cycle tracks
- ☛ More shops
- ☛ Create an internet café
- ☛ Reduce rates

## Vibrant Waikato

- ☛ Increased support for local cultural events including festivals, art and craft markets and exhibitions
- ☛ Develop a centre (possibly at the Old School Arts Centre) which provides a venue for art and craft exhibitions
- ☛ A new museum with galleries and information centre
- ☛ Renovate Poihakena Marae
- ☛ Create more affordable housing especially for senior citizens
- ☛ Build a new ancillary building at the arts centre
- ☛ Refurbish the Town Hall (better toilets and access, dressing rooms and a green room)
- ☛ Support community projects and create local employment
- ☛ Council should work in partnership with Tangata Whenua



# Where To From Here?

## The Next Steps

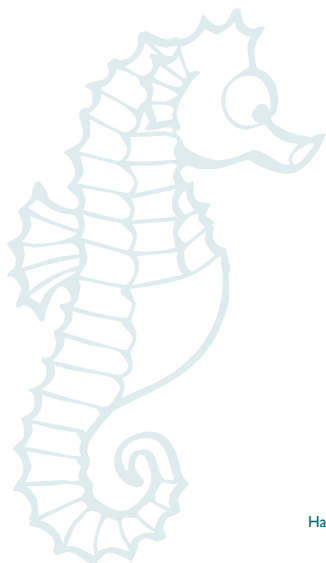
This review of the Raglan Naturally Community Plan has been approved by the Raglan Community Board.

Some of the ideas and priorities listed in this document will take a lot longer than a few years to resolve - and require more resources than are available at the moment.

The Raglan Community Board will continue to work with Council to prioritise issues and projects.

Please contact the Raglan Community Board, or the Waikato District Council if you would like any further information.

[www.waikatodc.govt.nz/raglannaturally](http://www.waikatodc.govt.nz/raglannaturally)



**Huntly Area Office**

142 Main Street  
Telephone: 07 828 7551

**Raglan Area Office**

7 Bow Street  
Telephone: 07 825 8129

**Hamilton Agency**

Hamilton City Council Building  
Garden Place, Hamilton

**Ngaruawahia District Office**

15 Galileo Street  
Telephone: 07 824 8633  
Fax: 07 824 8091

**Waikato District Council**

Postal Address:  
Private Bag 544  
Ngaruawahia  
NEW ZEALAND  
[www.waikatodistrict.govt.nz](http://www.waikatodistrict.govt.nz)

